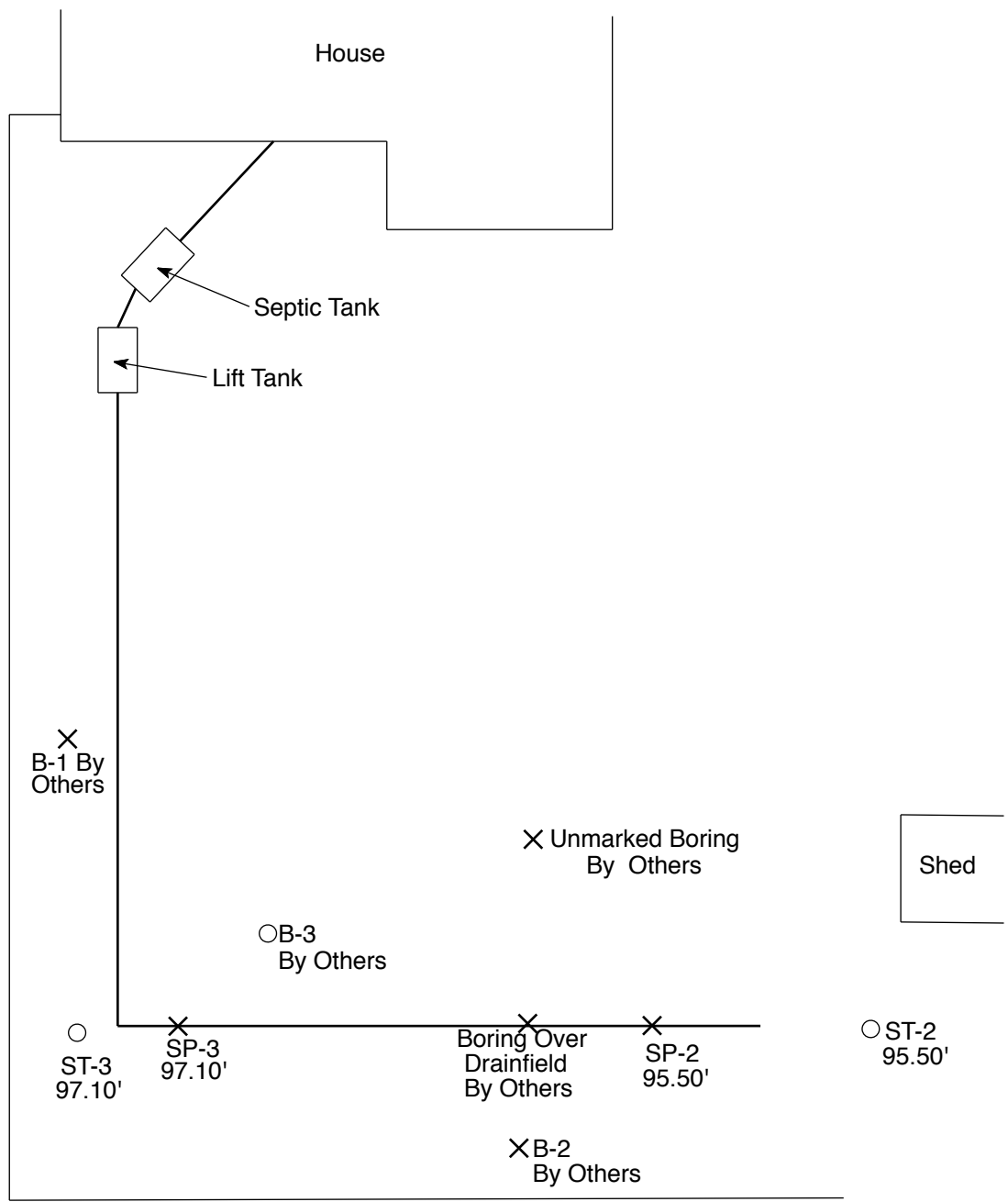


Soil Observations Log

Location of Project:		12190 Panama Ave N, May Twp, MN 55082					
Observations Made By:		Midwest Sewer Services		Date:	4/19/2024		
Classification System:		USDA					
Soil Observation:		ST-2		Soil Observation:	ST-3		
Surface Elevation of Observation		95.50'		Surface Elevation of Observation	97.10'		
		Benchmark = 100.00' base of power pole across street					
Depth In Inches	Rock %	<u>Soils Encountered</u>		Depth In Inches	Rock %	<u>Soils Encountered</u>	
0-7		10YR 2/2 Medium Sand		0-7		10YR 2/2 Medium Sand	
7-12		10YR 5/3 Medium Sand		7-16		10YR 3/4 Medium Sand	
12-19		10YR 4/4 Medium Sand		16-44		10YR 4/4 Medium Sand	
19-52		10YR 4/4 Medium Sand With 10YR 4/1 Layers		44-54		10YR 5/4 Medium Sand	
52-54		10YR 2/2 Medium Sand		54-55		10YR 5/4 Medium Sand With 10YR 6/2 & 7.5YR 5/8 Redox	
54-60		10YR 6/2 Medium Sand (Depleted Matrix) With 7.5YR 5/8 Redox		55-72		10YR 5/4 Medium Sand (Moist) With 7.5YR 5/8 Redox With Trace Of Gravel	
93.33'	Elevation To Bottom Of Distribution		93.93'	Elevation To Bottom Of Distribution			
-91.00'	Depth To Redox Or End Of Observation		-92.60'	Depth To Redox Or End Of Observation			
=2.33'/28"		Of Separation		=1.33'/16"		Of Separation	
End Of Soil Observation At:		90.50'/60"		End Of Soil Observation At:		91.10'/72"	
Limiting Soil Conditions At:		91.00'/54"		Limiting Soil Conditions At:		92.60'/55"	
Standing Water Present At:		None		Standing Water Present At:		None	
Bottom Of Distribution Medium / 26 Inches Or Elevation 93.33' At Soil Probe 2							
38 Inches Or Elevation 93.93' At Soil Probe 3							

Signature: _____





NO SCALE

12190 Panama Ave N, May Twp, MN 55082



